

Keysight Technologies Infiniium Oscilloscopes With 89600 VSA Software

Application Note

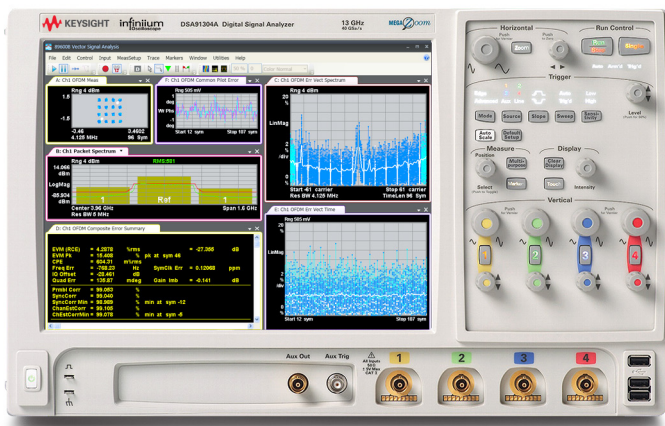


Table of Contents

Overview	3
89600 VSA software	4
Required software revisions	5
Install 89600 VSA Software	6
Hardware Configuration	7
I/O between computer and oscilloscope	7
Anti-alias filters and alias exposure-free mode	8
Operation	8
Sampling modes: full rate, minimize, and user rate	9
Resample location parameter	12
Triggering with the 89600 VSA software	12
Special trigger modes: custom trigger commands	13
Changing the preset conditions	13
Feature availability	13
Time and Frequency Span Operating Region	14
The relationship of main time length, span, and sample rate	14
Operating region curves for Infiniium oscilloscopes	15
Recording limits for Infiniium oscilloscopes	20
Out of Band Alias Exposure Zones	22
Setting up the alias exposure zone checker	22
Using the alias exposure zone checker	22
Appendix A: Downconverting RF and microwave signals into the range of the Infiniium oscilloscopes	26
Appendix B: Cables and I/O cards for connecting a PC to an Infiniium oscilloscope	27
Appendix C: PC requirements to run 89600 VSA software	27
Appendix D: Operating region curves	27
Additional Resources	35

Ultra-broadband vector signal analysis measurements using Keysight Infiniium oscilloscopes

Try before you buy!

Download the 89600 VSA software and use it free for 30 days to make measurements with your analysis hardware, or use our recorded demo signals by selecting **File > Recall > Recall Demo > signal type >** on the software toolbar. Request your free trial license today:

www.keysight.com/find/89600_trial

Overview

This application note describes the characteristics, setup, and operation of an Infiniium Series oscilloscope and the 89600 VSA software to provide broadband vector signal analysis. By taking advantage of the layered architecture and extensive digital signal processing (DSP) routines of the 89600 VSA software, the oscilloscope becomes a “front-end” data acquisition subsystem for the 89600 VSA software. This hardware-software combination provides up to 61.5 GHz of analysis bandwidth. See Table 1 for the supported oscilloscope models and the corresponding analysis bandwidths. Appendix A contains suggestions for wideband downconverters.

The 8-bit, high sample rate analog-to-digital converter (ADC) in the Infiniium Series oscilloscopes produces the ultra-wide analysis bandwidths shown in Table 1. These bandwidths are capable of providing a spurious-free dynamic range greater than or equal to 40 dB on most models. This is sufficient for 1.5 to 2% error vector magnitude (EVM) measurements in most cases. For spectrum measurements with higher dynamic range, a traditional spectrum analyzer should be used.

Table 1. Infiniium Series oscilloscopes supported by 89600 VSA software

Model	Analysis bandwidth	Max. sample rate	Supported memory option	When using scope channels 1 and 2, or 3 and 4 at the same time	
				Analysis bandwidth limitation	Max sample rate limitation
8064	0 to 600 MHz	2 GSa/s	2 M (4/8/16/32/64 M options)		
8104	0 to 1.0 GHz	4 GSa/s	2 M (4/8/16/32/64 M options)	781.25 MHz	2 GSa/s
9064	0 to 600 MHz	5 GSa/s	10 M (20/50/100/200/500 M options)		
9104	0 to 1.0 GHz	10 GSa/s	10 M (20/50/100/200/500 M options)		
9254	0 to 2.5 GHz	10 GSa/s	10 M (20/50/100/200/500 M options)		
9404	0 to 4.0 GHz	20 GSa/s	10 M (20/50/100/200/500 M options)	3.90625 GHz	10 GSa/s
80204	0 to 2 GHz	10 GSa/s	512 K (64 M option)		
80304	0 to 3 GHz	10 GSa/s	512 K (64 M option)		
80404	0 to 4 GHz	20 GSa/s	512 K (64 M option)		
80604	0 to 6 GHz	20 GSa/s	512 K (64 M option)		
80804	0 to 8 GHz	40 GSa/s	512 K (64 M option)	7.8125 GHz	20 GSa/s
81004	0 to 10 GHz	40 GSa/s	512 K (64 M option)	7.8125 GHz	20 GSa/s
81204	0 to 12 GHz	40 GSa/s	512 K (64 M option)	7.8125 GHz	20 GSa/s
81304	0 to 13 GHz	40 GSa/s	512 K (64 M option)	7.8125 GHz	20 GSa/s
90254	0 to 2.5 GHz	10 GSa/s	10 M (20/50/100/200/500 M/1 G options)		
90404	0 to 4 GHz	20 GSa/s	10 M (20/50/100/200/500 M/1 G options)		
90604	0 to 6 GHz	20 GSa/s	10 M (20/50/100/200/500 M/1 G options)		
90804	0 to 8 GHz	40 GSa/s	10 M (20/50/100/200/500 M/1 G options)		
91204	0 to 12 GHz	40 GSa/s	10 M (20/50/100/200/500 M/1 G options)		
91304	0 to 13 GHz	40 GSa/s	10 M (20/50/100/200/500 M/1 G options)		
X91304	0 to 13 GHz	80 GSa/s	10 M (20/50/100/200/500 M/1/2 G options)	13 GHz	40 GSa/s
X91604	0 to 16 GHz	80 GSa/s	10 M (20/50/100/200/500 M/1/2 G options)	15.625 GHz	40 GSa/s
X92004	0 to 20 GHz	80 GSa/s	10 M (20/50/100/200/500 M/1/2 G options)	15.625 GHz	40 GSa/s
X92504	0 to 25 GHz	80 GSa/s	10 M (20/50/100/200/500 M/1/2 G options)	15.625 GHz	40 GSa/s
X92804	0 to 28 GHz	80 GSa/s	10 M (20/50/100/200/500 M/1/2 G options)	15.625 GHz	40 GSa/s
X93204	0 to 31.25 GHz	80 GSa/s	10 M (20/50/100/200/500 M/1/2 G options)	15.625 GHz	40 GSa/s
X92004Q	0 to 20 GHz	80 GSa/s	20 M (50/100/200/500 M/1/2 G options)		
X92504Q	0 to 25 GHz	80 GSa/s	20 M (50/100/200/500 M/1/2 G options)		
X93304Q	0 to 31.25 GHz	80 GSa/s	20 M (50/100/200/500 M/1/2 G options)		
X95004Q	0 to 50 GHz ¹	160 GSa/s	20 M (50/100/200/500 M/1/2 G options)		
X96204Q	0 to 61 GHz ²	160 GSa/s	20 M (50/100/200/500 M/1/2 G options)		
9024H	0 to 250 MHz	1.25 GSa/a	50 M (100/200/500 M options)		
9054H	0 to 500 MHz	2.5 GSa/a	50 M (100/200/500 M options)		
9104H	0 to 1 GHz	5 GSa/a	50 M (100/200/500 M options)		
9204H	0 to 2 GHz	10 GSa/s	50 M (100/200/500 M options)	1 GHz	5 GSa/s

1. When using RealEdge inputs. 31.25 GHz when using normal inputs.

2. When using RealEdge inputs. 62.5 GHz with RealEdge inputs and reduced alias protection. 31.25 GHz when using normal inputs.

89600 VSA software

The 89600 VSA software is the heart of the ultra-broadband VSA and oscilloscope combination. This software provides flexible tools for analyzing and demodulating even the most advanced digital modulations, including those not defined by an established standard.

The 89600 VSA software makes measurements on signals in the time and frequency domains using either the baseband or IF zoom mode. In baseband mode, the analysis frequency range is from 0 Hz to the stop frequency. In IF zoom mode, the analysis frequency range is defined by center frequency and span. There is also an I+jQ mode for analyzing two baseband quadrature channels. For supported 4-channel Infiniium oscilloscope models, the 89600 VSA software provides up to four channels of vector signal analysis, or dual I+jQ capability. Results for any mode can be displayed as magnitude or phase, in I/Q and several other formats. In addition, the 89600 VSA software provides a signal record feature for later playback and analysis.

With the optional digital demodulation, Option AYA, modulation quality measurements in the form of error vector magnitude (EVM) can be made on digital wireless communications signals with bandwidths of hundreds of MHz.

In addition, powerful diagnosis capabilities allow you to determine the exact impairments that cause a digitally modulated signal to fail quality standards. The features of the digital demodulator include variable-block-size signal acquisition, pulse burst edge search, synch word search and a user-controllable adaptive equalizer.

User-selectable filter types include cosine (raised and square-root raised), Gaussian, low-pass, and user-defined. You can vary the filter alpha/BT shape factor. Supported modulation formats for both burst and continuous carriers include FSK, BPSK, QPSK, OQPSK, DQPSK, $\pi/4$ DQPSK, 8PSK, QAM (16 to 1024), MSK and more.

- For IEEE 802.11ac and 802.11n WLAN applications, Options B7Z and BHJ provide 2-, 3-, or 4-channel MIMO analysis which can be used with supported 2- or 4-channel Infiniium models.
- Mobile WiMAX™ 2x2 MIMO analysis is available in Option B7Y IEEE 802.16e OFDMA modulation analysis.
- LTE and LTE-Advanced modulation analysis is available with Option BHD/BHG for FDD and BHE/BHH for TDD signals. Infiniium oscilloscopes can be used for up to 4x4 MIMO and carrier aggregation.

For information on additional modulation analysis options, see www.keysight.com/find/89600vsa

Required software revisions

The following table lists the software revisions, by model number, for an oscilloscope to work with the 89600 VSA software. GPIB and LAN refer to the choice of connections between the oscilloscope and the PC running the software. Firmware version numbers greater than these will also work.

Table 2. Minimum software revision numbers

Model number	Infiniium	89600A ¹	89600
8064	A.04.90	6.20	13.00
8104	A.04.90	6.20	13.00
9064	02.00	11.20	13.00
9104	02.00	11.00	13.00
9254	02.00	11.00	13.00
9404	02.00	11.00	13.00
80204	A.05.00	6.20	13.00
80304	A.05.00	6.20	13.00
80404	A.05.00	6.20	13.00
80604	A.05.00	6.20	13.00
80804	A.04.00	6.00	13.00
81004	A.04.00	6.00	13.00
81204	A.04.00	6.00	13.00
81304	A.04.00	6.00	13.00
90254	01.00	8.00	13.00
90404	01.00	8.00	13.00
90604	01.00	8.00	13.00
90804	01.00	8.00	13.00
91204	01.00	8.00	13.00
91304	01.00	8.00	13.00
91604	03.00	---	13.00
92004	03.00	---	13.00
92504	03.00	---	13.00
92804	03.00	---	13.00
93204	03.00	---	13.00
92004Q	04.00	---	15.01
92504Q	04.00	---	15.01
93304Q	04.00	---	15.01
95004Q	04.00	---	15.01
96204Q	04.00	---	15.01
X91304	04.10	---	16.20
X91604	03.00	---	13.00
X92004	03.00	---	13.00
X92504	03.00	---	13.00
X92804	03.00	---	13.00
X93204	03.00	---	13.00
X92004Q	04.00	---	15.01
X92504Q	04.00	---	15.01
X93304Q	04.00	---	15.01
X95004Q	04.30	---	16.01
X96204Q	04.30	---	16.01
9024H	04.10	---	16.20
9054H	04.10	---	16.20
9104H	04.10	---	16.20
9204H	04.10	---	16.20

1. Version 10.00 required for 3- or 4-VSA channel analysis.

Install 89600 VSA software

There are two operating modes for running the software: embedded in the Infiniium scope, or with the software running remotely in a PC connected to the oscilloscope.

Remote PC connection

Insert the Keysight Technologies, Inc. 89600 VSA software installation media (DVD) and follow the instructions in the installation manager window. Click **Install 89600 VSA**. Continue through the Installation Manager to complete the installation. Exit the installation manager window.

Embedded operation

Infiniium Series oscilloscopes come with 89600 VSA software. To install, double click the 89600 VSA software's executable file. The most recent version of the software can also be downloaded from www.keysight.com/find/89600_trial. For more information, follow the instructions in the installing 89600 VSA software in the Keysight Infiniium Scopes section of the installation guide. This guide can be found on the Keysight Technologies 89600 VSA software media (DVD) at \manuals\InstallationGuide.pdf.

Note: For embedded operation, be sure to use the software-only installation (no hardware support) selection as directed by the installation guide.

Note: Embedded operation with the 89600 VSA software is not recommended for Infiniium 8000 and 80000 Series scopes.

Note: Infiniium Series scopes do not have built-in internal DVD drives. For those cases, you need the appropriate option for an internal drive, an optional external DVD-RW drive (such as the Keysight N5473A), or access to an external DVD or LAN to download the software.

Hardware Configuration

I/O between computer and oscilloscope

Connect the oscilloscope and the computer as shown in Figures 1a through 1c. There are two options for the connection, GPIB and LAN. Refer to Appendix B for more information on the LAN cable, the GPIB cable, and the GPIB interface cards.

For improved measurement speed, use of a LAN is recommended with deep memory oscilloscopes (8000, 9000A, 9000 H-, 80000, 90000, 90000 X-Series, or 90000 Q-Series).

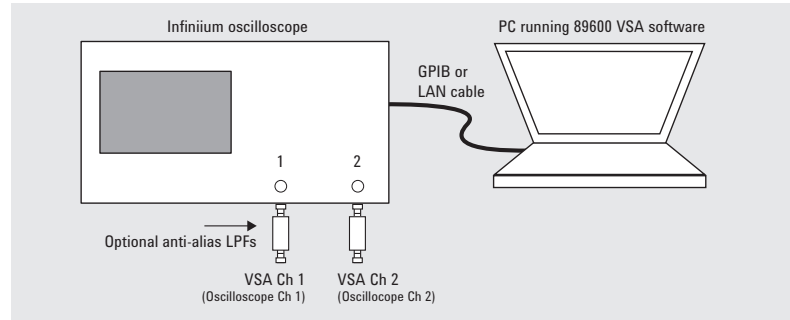


Figure 1a. Equipment connections for 2-channel oscilloscopes¹

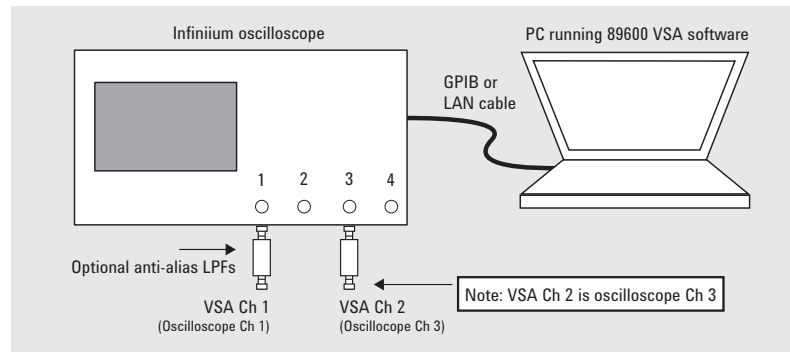


Figure 1b. Equipment connections for 4-channel oscilloscopes used to provide 2-channel input to 89600 VSA software¹

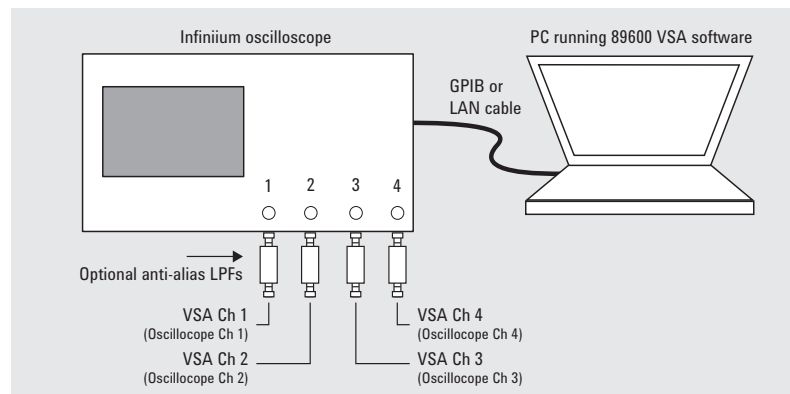


Figure 1c. Equipment connections for 4-channel oscilloscopes used to provide 3- or 4-channel VSA measurements using the 89600 VSA software¹

1. The custom channels feature in the 89600 allows you to specify a different mapping between the oscilloscope channels and 89600 software measurement channels.

To complete the configuration of the PC, follow the instructions in the “Configuring Infiniium Windows XP Scopes” chapter in the installation and service guide. This guide can be found on the 89600 VSA software media at `\manuals\InstallationGuide.pdf`.

Anti-alias filters and alias exposure-free mode

The ultra-broadband VSA software and scope combination can be configured to be essentially alias-free by using the **Full Rate Sampling** mode and installing an external lowpass filter on the oscilloscope input. The need for a lowpass filter depends on the scope model number being used, the number of channels on the scope being used, and the analysis frequency. Table 3 provides information on the lowpass filter characteristics needed when making measurements for the given scope listed, and the number of channels being used.

Table 3. Minimum lowpass filter characteristics

Oscilloscope model ¹	Number of scope channels used	Cutoff frequency	Stopband frequency ²
80804/81004/81204/81304	3 or 4	7.8125 GHz	12.2 GHz
8104	1 or 2	1.0 GHz	3.0 GHz
8104	3 or 4	781.25 MHz	1.22 GHz
8064	1, 2, 3, 4	600 MHz	1.4 GHz
9404A	1 or 2	4 GHz	6 GHz
9024H	1, 2, 3, 4	250 MHz	1 GHz
9054H	1, 2, 3, 4	500 MHz	2 GHz
9104H	1, 2, 3, 4	1 GHz	4 GHz
9204H	1 or 2	2 GHz	8 GHz
9204H	3 or 4	1 GHz	4 GHz

Operation

Operation of the ultra-broadband 89600 VSA software and Infiniium oscilloscope combination is substantially the same as that of the 89600 VSA software configured with other platforms. See the following sections for some differences or special configurations.

NOTE: DO NOT adjust any controls on the oscilloscope's front panel. All oscilloscope operation is controlled by the software. The oscilloscope controls cannot be locked, and adjusting them may cause the software to give errors.

NOTE: Calibrate the oscilloscope periodically by following its calibration instructions. With a mouse connected to the oscilloscope at power on, select Utilities>Calibration and follow the displayed instructions on the scope.

1. Models with channel configurations not listed do not require a low-pass filter. The scope's input circuitry provides sufficient alias protection.
2. Frequency at which the loss must be > 40 dB.

Sampling modes: full rate, minimize, and user rate

Full rate mode

When the **Sample** mode is set to **Full Rate** using the **Input> Extensions...>SampleMode> FullRate** menu path, the oscilloscope sample rate is fixed at the maximum for each oscilloscope model according to Table 4.

Table 4. Sample rates of Infiniium oscilloscopes in Full Rate mode

Infiniium model	Full sample rate
8104	4 GSa/s ¹
8064	2 GSa/s
9064	5 GSa/s
9104	10 GSa/s
9254	10 GSa/s
9404	20 GSa/s ³
80204/80304	10 GSa/s
80404/80604	20 GSa/s
80804	40 GSa/s ²
81004	40 GSa/s ²
81204	40 GSa/s ²
81304	40 GSa/s ²
90254	10 GSa/s
90404/90604	20 GSa/s
90804/91204/91304	40 GSa/s
X91304/X91604/X92004/X92504/X92804/X93204	80 GSa/s ⁴
X92004Q/X92504Q/X93304Q/X95004Q/X96204Q	80 GSa/s
X95004Q/X96204Q RealEdge Inputs	160 GSa/s
9024H	1.25 GSa/a
9054H	2.5 GSa/a
9104H	5 GSa/a
9204H	10 GSa/s ⁵

With the addition of the anti-alias lowpass filter described earlier, this mode is free of alias exposure zones. This means that no signal anywhere in the range of the broadband 89600 VSA software and Infiniium scope's center frequency will alias upon the desired signal and corrupt the measurement.

There is a trade-off when using this mode. The 8000, 9000A, 80000, 90000, 90000 X-Series, and 90000 Q-Series oscilloscopes have deep memories allowing long record lengths. If a longer **Main Time** (or **Result Length** for digital demodulation) is needed for more resolution in the frequency domain, go to the **Input** menu, click on **Extensions...> SampleMode** and select **Minimize** from the dropdown menu. The **Main Time** limit for any sample rate is shown in the operating region curves that appear later in this application note.

NOTE: The 9000 H-Series oscilloscopes can only be set to full sample rate mode. Choosing Minimize or User Rate modes will have no effect for these scopes.

NOTE: Any limitation to Main Time (or Result Length) will be indicated by the inability of the software to increase the Main Time or decrease RBW when number of Frequency Points is increased.

1. 2 GSa/s when using scope channels 1 and 2, or 3 and 4 at the same time.
2. 20 GSa/s when using scope channels 1 and 2, or 3 and 4 at the same time.
3. 10 GSa/s when using scope channels 1 and 2, or 3 and 4 at the same time.
4. 40 GSa/s when using scope channels 1 and 2, or 3 and 4 at the same time.
5. 5 GSa/s when using scope channels 1 and 2, or 3 and 4 at the same time.

Minimize mode

When **Sample mode** is set to **Minimize**, the oscilloscope's sample rate is set to the smallest value possible for proper IF subsampling with the current center frequency/span combination. Depending on the center frequency/span combination, the IF subsample rate can be less than the full sample rate available in the oscilloscope. When it is much less than the full rate, significant increases in **Main Time** are possible.

Minimize mode gives the largest values of **Main Time** on the operating region curves. However, it produces less spreading of the out-of-band alias exposure zones. Use **Minimize** if there are no out-of-band signals and the longest **Main Time** values are desired.

Sampling modes: full rate, minimize, and user rate continued

User Rate mode

The **User Rate** setting allows you to directly control the oscilloscope's sample rate. In this mode you select the oscilloscope sample rate to be used. The actual sample rate selected will be the highest rate that is less than or equal to the **User Sample Rate** setting. By controlling the oscilloscope's sample rate you can directly influence the update rate of the 89600 VSA software. This is because sample rate directly affects the number of points the oscilloscope must transfer to the PC. Certain measurements can be made significantly faster by limiting the oscilloscope sample rate due to reduced data transfer requirements.

There are two types of signal aliasing to be concerned with when using the 89600 VSA software with the Infiniium oscilloscope. The first is aliasing of unwanted out-of-band signals into the measurement span. This will not be a problem with the majority of clean, single-signal devices. However, devices with multiple or spurious signals could have this type of aliasing. It is the user's responsibility to check for these signals. See Table 5 for more suggestions. A second type of aliasing happens when the sample rate causes the in-band signal to fold over on itself. This in-band (or self-) aliasing is avoided in **Full Rate** and **Minimize** mode by automatically selecting a suitable sample rate. However, in **User Rate** in-band aliasing may be a problem. To avoid in-band aliasing you must select a suitable sample rate based on your measurement center frequency and span.

To avoid in-band aliasing the oscilloscope sample rate (F_s) must be selected so that the analysis span falls within confined regions. Staying within these regions prevents the analysis span from being positioned too close to $F_s/2$. When F_s is selected so that the span is confined to be within a single gray box (see diagrams below), in-band aliasing is avoided. See the following table for the equations that describe these in-band alias-free regions.

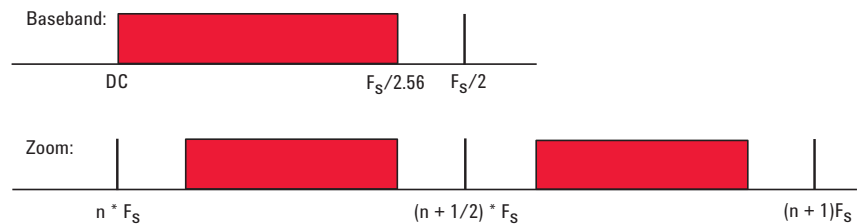


Figure 2. Avoiding in-band aliasing by selecting F_s within a confined span

The primary use of User Rate mode is to increase the update rate for measurements that have been carefully engineered to avoid unwanted alias signals.

NOTE: The 89600 VSA software does not attempt to avoid alias exposure regions when in User Rate mode.

Sampling modes: full rate, minimize, and user rate continued

This table summarizes the difference in approach to alias protection between the various sample modes:

Table 5. Varying approaches for alias protection

Full Rate	Both in-band and out-of-band aliasing are prevented through use of an appropriate low-pass filter.
Minimize	<p>In-band aliasing is avoided by the 89600 VSA software making an appropriate sample rate selection based on the center frequency and span settings.</p> <p>Out-of-band aliasing is minimized through the use of an appropriate low-pass filter, and is eliminated through the use of an appropriate band-pass filter. It is the user's responsibility to provide either.</p>
User Rate	<p>You are responsible to avoid in-band aliasing through appropriate selection of sample rate based on center frequency and span. To ensure no in-band aliasing is present the oscilloscope sample rate (F_s) must be selected to meet this criteria:</p> <p>Baseband: $F_{STOP} \leq F_s/2.56$</p> <p>Zoom: $(n \cdot F_s)/2 \leq F_{CENTER} - (1.28 \cdot F_{SPAN})/2$ AND $((n+1) \cdot F_s)/2 \geq F_{CENTER} + (1.28 \cdot F_{SPAN})/2$ where $n = 1,2,3,4...$</p> <p>Out-of-band aliasing is minimized through the use of an appropriate low-pass filter, and is eliminated through the use of an appropriate band-pass filter. It is the user's responsibility to provide either.</p>

Another concern in **User Rate** mode is that you may see unwanted amplitude variability in two channel measurements. This can occur if any part of the measurement frequency span falls within the regions defined by:

$$(2 \cdot n + 1) \times F_s / 2 \pm 0.1 \times F_s$$

where $n = 1,2,3,4...$

where F_s is the actual oscilloscope sample rate. Make sure you choose a sample rate where such overlap does not occur.

Resample location

The 8000, 9000A, 9000 H-, 80000, 90000, 90000 X-Series, and 90000 Q-Series oscilloscopes have deep memories allowing long record lengths. The 89600 VSA software automatically resamples the data taken to the span required, which minimizes the amount of data actually required for the measurement. However, the large number of data points possible with the Infiniium scopes configured with large memory options can exceed the software's internal limit. Many hardware platforms will resample the data before sending it to the 89600 VSA software, but this is not the case for the Infiniium scopes. To deal with this, resampling is available in the 89600 VSA software's Infiniium driver, or in the main body of the 89600 VSA software.

The advantage of choosing resampling in the driver is that longer time lengths are available, since only needed measurement points are sent to the 89600 VSA software. The tradeoff is that the raw scope data is not available for viewing, which may mean that some events may not be seen in the 89600 VSA software's traces. For instance, a trigger may occur on oscilloscope data that is outside of the measurement span and therefore not visible in the 89600 VSA software's traces. Resampling in the driver is on by default, but may be turned off by changing the **Resample Location** parameter to **Measurement** instead of **Driver** in the **Input > Extensions... > ResampleLocation** menu.

You will see that when the **Resample Location** is set to **Driver**, the **Raw Main Time** trace title will be changed to **Resampled Raw Main Time**. This helps avoid confusion and makes it easily apparent when the resampling is occurring in the Infiniium driver and not in the main 89600 VSA software.

There will be some additional changes that may affect backward compatibility when the **Resample Location** hardware parameter is set to **Driver**.

- The **Raw Main Time** trace will no longer display the scope's baseband data when the **Resample Location** hardware parameter is set to **Driver** (except when using baseband mode and the measurement sample rate is at the same sample rate as the oscilloscope). Instead, it will display the data from the output of the driver's resampler.
- Recordings will normally capture complex data at the measurement sample rate/span/center frequency instead of the raw scope data (i.e., real baseband data at the scope sample rate).
- Channel triggering may be harder to set up since the triggering is being done by the scope hardware before the resampler, but **Raw Main Time** will be displaying the data from the output of the resampler.

Triggering with the 89600 VSA Software

The trigger parameter hold-off has two modes in the 89600 VSA software useful for broadband vector signal analysis: below level and conventional. The below level mode definition is optimized for high duty cycle communications bursts and is different from the traditional definition of hold-off for low duty cycle.

See the 89600 VSA software's interactive help tool for a complete description of the below level and conventional hold-off modes. See the oscilloscope's help tool for a description of the traditional low duty cycle hold-off.

Special trigger modes: custom trigger commands

The Infiniium oscilloscopes have extensive trigger conditioning and pattern capability. To take advantage of any mode not covered in the ultra-broadband VSA software, a custom trigger mode is available. Click **Input > Extensions... > CustomTrigType** and click the check box. You can then enter the SCPI commands for specific triggering modes using the **CustomTrigCommand** entry box. Enter the sequence of SCPI trigger commands in the dialog box. Use a semicolon to separate the commands. The commands will be transmitted to the oscilloscope upon clicking the last **OK** box when closing the configure windows and whenever standard trigger commands are sent.

Changing the preset conditions

The preset conditions can be changed for the oscilloscope by entering SCPI commands in the **Input > Extensions...** menu path and entering commands in the **UserSCPIPreset** area. Separate commands with a semicolon. Verify that any commands do not conflict with the normal operation of the software.

Feature availability

- No **Magnitude Trigger** (however, **Channel Trigger** is available).
- Possible limitation of movement on the operating region curve to avoid alias corruption of the measured signal. This depends on the settings of **Center Frequency**, **Span**, **Sample** mode, and the number of **Frequency Points**. There is also potential interference due to the alias products of out-of-band signals. (See Table 5.)
- No built-in wideband calibrator. The frequency response corrections are determined from factory data.

Time and frequency span operating region

The relationship of main time length, span, and sample rate

The operating region curves for the ultra-broadband 89600 VSA software and oscilloscope combination are different from those of standalone 89600 VSA software's because the **Main Time Length** may be limited for some sample rate, center frequency, and span combinations. The differences are due to three hardware characteristics of the ultra-wideband ADCs in the Infiniium oscilloscopes:

- A much higher sampling rate
- The lack of a hardware decimator, which means the decimation must be performed by the software from same-length records taken at much higher sampling rates
- Limited memory capacity

The record length, or **Main Time Length** of a measurement is shown in the lower right corner of a spectrum or time display window. This is the length of time the oscilloscope sampled the input waveform for the measurement. These samples are transferred to the DSP and measurement algorithms running on the software.

Maximum Main Time Length is normally adjusted by setting the number of **Frequency Points** in the **MeasSetup > ResBW** menu. **ResBW Coupling** is set to **Auto**, and **ResBW** mode is set to **Arbitrary** or **1-3-10**. The Time tab can then be used to set **Main Time Length** up to this maximum limit. This setup keeps **Main Time Length** maximized and within the DSP requirements.

Although **Main Time Length** can be adjusted directly by the **MeasSetup > Time** menu, it cannot be greater than the limit imposed by the number of **Frequency Points** line on the operating region chart. See the online Help tool for a complete discussion.

Note: The maximum Main Time Length can be found as follows:

The relationship between the parameters is shown below:

$$\text{Max Main Time Length} = \frac{\text{Number of frequency points}}{\text{Span}}$$

$$\text{where Span} = \frac{\text{Sample rate}}{1.28} \text{ (for IF Zoom mode)}$$

$$\text{Max Main Time Length} = \frac{1.28 \times \text{Number frequency points}}{\text{Sample rate}}$$

where *Sample rate* = current sample rate computed by the software for alias-free measurements

Maximum **Main Time Length** may be further limited by oscilloscope memory depth.

Operating region curves for Infiniium oscilloscopes

Several interrelated characteristics of both the Infiniium oscilloscopes and the 89600 VSA software combine to form a region within which the 89600 VSA software's operation is constrained. The 89600 VSA software characteristics that affect this operating region include maximum number of time points, the minimum number of time points (not user settable), a maximum acquisition record size (not user settable) and a maximum decimation factor (not user settable). The Infiniium characteristics that affect the operating region are sample rate and memory depth. This section describes the effects each of these parameters have on the 89600 VSA software operating region.

The operating region is described in terms of span and time record length. For a given window type it could just as easily be described in terms of span and RBW. Figure 3 shows the effects of the number of time points the 89600 VSA software is allowed to collect. Because sample spacing is inversely proportional to span, the record length decreases as span increases. Although a family of lines is shown, only two define the operating region at any one time. The lowest line gives the smallest time record length allowed for any given span. The position of this line is determined by minimum number of time points (16) the 89600 VSA software requires in a time record. The line that defines the upper time record length boundary is positioned by the maximum number of time points the 89600 VSA software allows in a time record. The maximum number of time points is determined by the **Frequency Points** setting (**MeasSetup>ResBW>Frequency Points**). The 89600 VSA software is constrained to operate in the region between these two lines. Note that the operating lines of Figure 3 are the same for all Infiniium models.

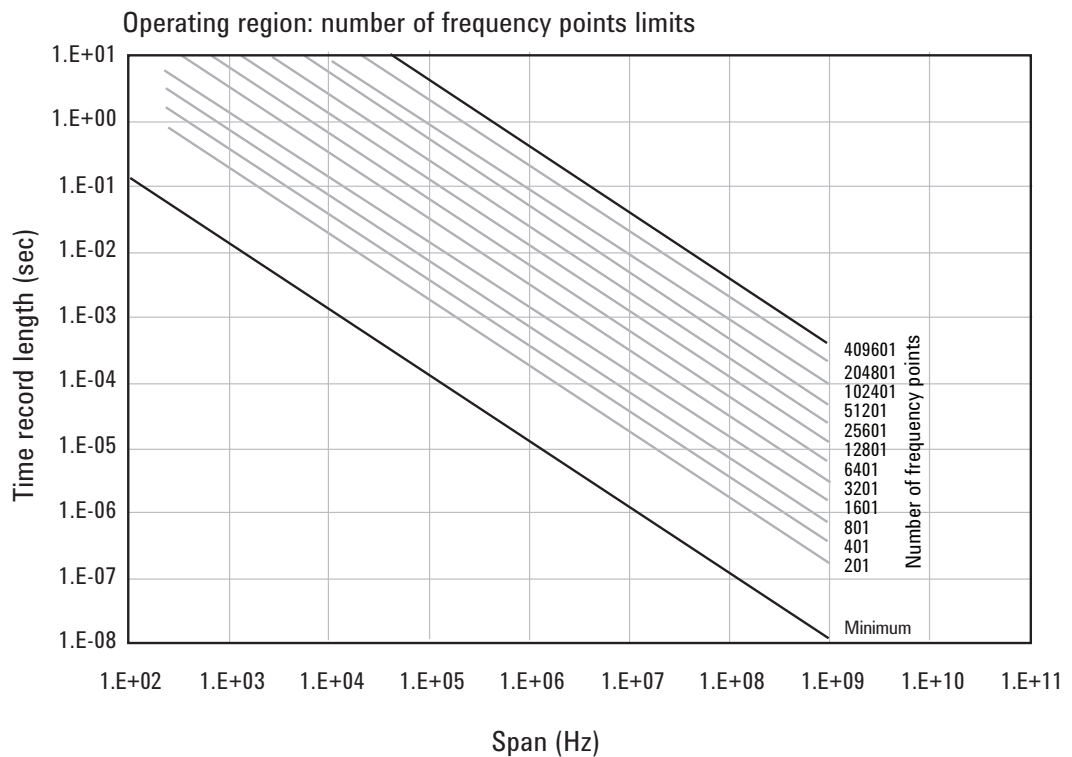


Figure 3. The user-settable parameter, frequency points, begins to determine the boundaries of the time record length and frequency span operating region.

Operating region curves
for Infiniium oscilloscopes
continued

In addition to the time record length limits, there are limits to the allowable range of spans. These are represented as vertical lines on the operating region in Figure 4. The upper span limit is set by the scope's sample rate. For the highest sample rate supported by the scope this boundary may be further limited by the analog performance of the scope's front-end. To zoom in on a signal of interest by reducing the span, traditional VSA instrumentation reduces the effective sample rate through the use of decimating filters while keeping the ADC at full rate. This technique allows for maximum alias protection. Unlike traditional VSA instruments, the Infiniium scopes have no decimating filters. To compensate for this shortcoming, decimating filters have been built into the 89600 VSA software. The maximum amount of decimation allowed by the 89600 VSA software sets the minimum span for any given scope sample rate.

The operating region depicted in Figure 4 is determined by constraints imposed by both time record length and span. The Infiniium scopes support many sample rates. For each sample rate, the operating region shifts slightly on the operating region graph. As the sample rate decreases, the operating region shifts slightly up and to the left. So, for any given scope, there will be a family of overlapping operating regions, one for each supported sample rate.

In general, these regions would be the same for every scope that supports a given sample rate. The only difference is when the maximum span at the maximum sample rate is limited by analog performance of the scope's front-end rather than just by the sample rate.

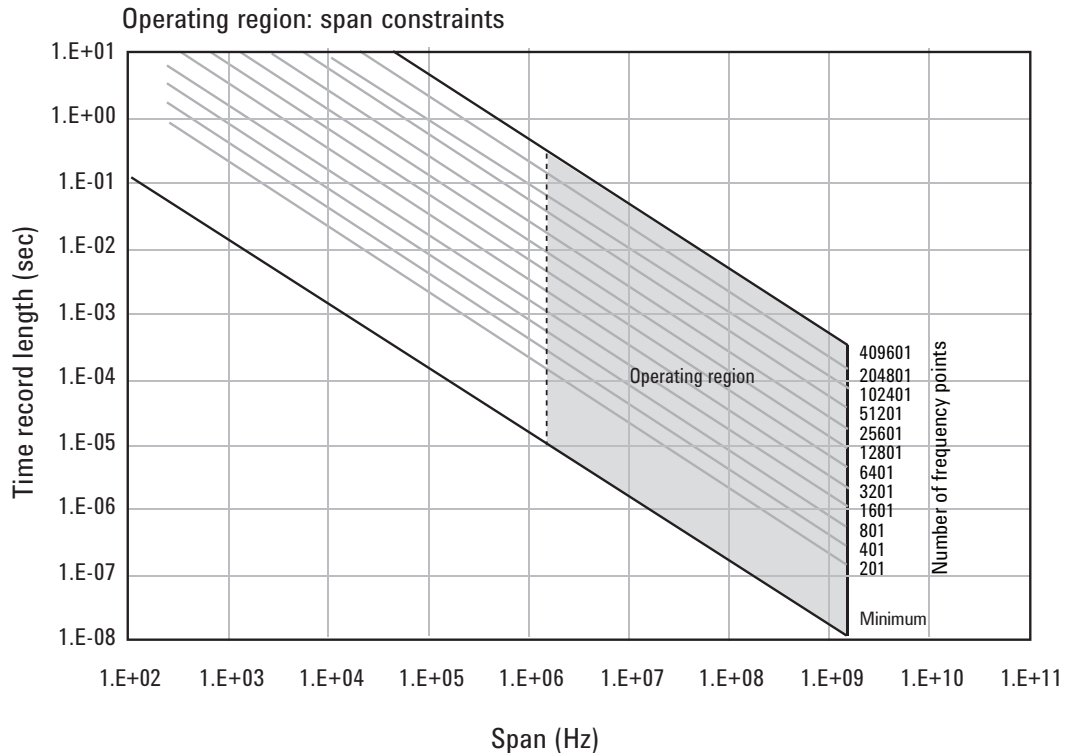


Figure 4. The allowable range of spans, which may differ by model, further bound the operating region of the oscilloscope.

Operating region curves for Infiniium oscilloscopes continued

In addition to time record and sample rate limits, the operating region can be further limited by memory constraints. Both the scope and the 89600 VSA software impose different, but similar, constraints due to maximum memory usage. Figure 5 shows how memory limits can actually affect both maximum time length and minimum span (mostly the horizontal curve that drops at the left). For a given scope sample rate the scope memory imposes an upper bound on the time record length. This is shown as the upper portion of the operating region that is effectively cut off by the horizontal memory line. This limit is fairly constant until the span narrows significantly. The sharp drop at the left end of the memory curve is due to the effects of decimation and extra points acquired for 89600 VSA software filter settling. As the amount of decimation increases, the portion of the available sample memory that is required for settling becomes a much higher percentage of the available overall sample memory. When this happens, the portion of the sample memory that is available for displayed time record length is quickly reduced.

The memory curve moves up, exposing more of the available operating region, as the scope's optional memory is increased. However, the 89600 VSA software imposes its own record size limit. Increasing the scope's memory beyond the 89600 VSA software limit has no further impact on the available operating region.

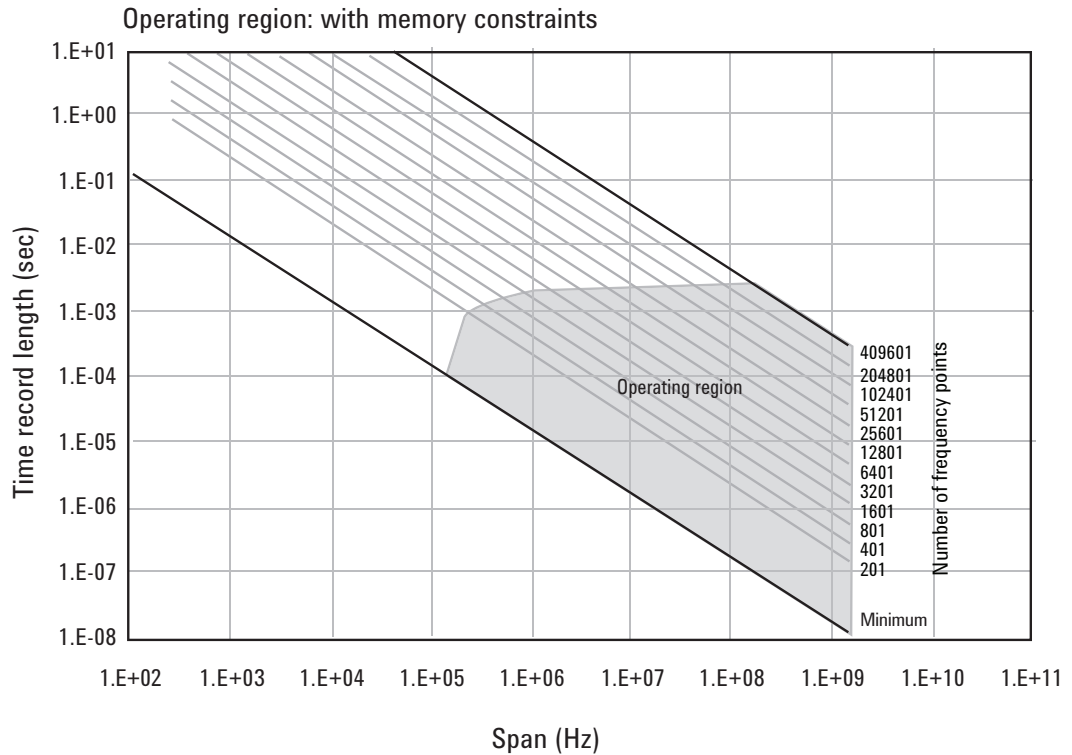


Figure 5. The oscilloscope's available memory also constrains the operating region.

Operating region curves for Infiniium oscilloscopes continued

Taken together, these constraints form an operating region that the 89600 VSA software must remain within (Figure 6). To complete our understanding there are a couple of additional points regarding sampling mode and alias exposure that must be presented.

The graphs presented in this section describe discrete operating regions that are a function of sample rate. In **Full Rate** or **User Rate** sample modes a single operating region curve fully describes the constraints imposed on the measurement. However, when in **Minimize Sample** mode the 89600 VSA software freely transitions from region to region based on the optimum sample rate it chooses. Choosing **Minimize** allows **Main Time** to increase beyond the alias exposure-free zone limit. The family of operating region curves should be taken as an approximation of how the 89600 VSA software operates when in **Minimize** mode.

Keep in mind that in **Minimize** sampling mode, while the time record limit is increased, alias-free operation is not guaranteed. This means that signals outside the measurement span may appear in the analysis span.

In **Full Rate** sample mode with the use of appropriate low pass filtering (Table 3), signal aliasing is completely avoided. In this case the **Operating Region** is renamed **Alias Exposure Free Zone** to indicate this special condition.

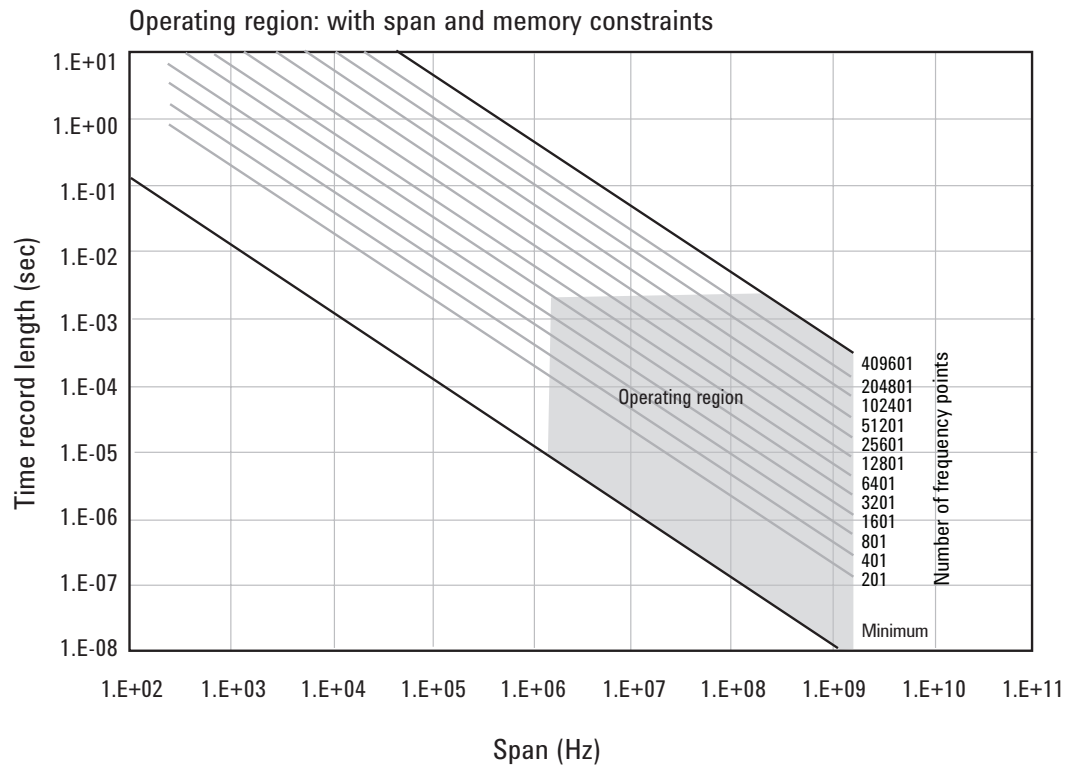


Figure 6. The true operating region is fully described when constrained by all the previous parameters: number of frequency points, span, and oscilloscope memory. See Appendix D for operating region charts for the various supported oscilloscopes.

Operating region curves for Infiniium oscilloscopes continued

Although the operating regions for all scope models are similar, each model or model family may have important differences in their operating region curves due to differences in maximum sample rate, front-end analog performance, and memory option. Appendix D provides the operating curves for all supported scopes and most memory options.

Here are some additional details to keep in mind when viewing the curves:

8000, 9000A and 9000 H-Series

These models have deep memory, which allows greater movement on the operating region curves for the full rate and user rate sampling modes.

Memory utilization has these additional effects on the operating curves:

- For optional memory greater than 2 M-samples the operating region for the 4 GSa/s and 2 GSa/s are very similar, differing only in the minimum span (8000 Series only).
- When using scope channels 1 and 2 or 3 and 4 at the same time, the time record limit is half the normal limit.

80000 Series models

These models have deep memory, which allows greater movement on the operating region curves for the full rate and user rate sampling modes.

Memory utilization has these additional effects on the operating curves:

- Optional memory is not utilized for sample rates of 5 GSa/s and above.
- When using scope channels 1 and 2 or 3 and 4 at the same time, the time record limit is half of the 1- or 2-channel limit for sample rates of 5 GSa/s and above.

Recording limits for Infiniium oscilloscopes

The 89600 VSA software allows the acquisition of long records to be captured. Analysis is done as a post-processing operation. This feature is called recording. Recordings can be much longer than time records in live measurements.

Prior to taking a recording, live test measurements of **Main Time Length** are usually made at the desired span. Then, when the recording is made, the 89600 VSA software no longer uses **Main Time Length** but, instead, uses **Recording Length** to determine length of the acquired record. It is recommended that recordings be made only in **Full Rate**, **User Rate**, or **Minimize** sampling modes.

When making a recording using the 89600 VSA software, the scope sample rate and memory depth determines the maximum recording length. When in **User Rate** mode the maximum recording lengths will increase as the sample rate decreases. In some cases the recording length increase is directly proportional to the sample rate decrease or the memory depth increase. However, this is not always the case, as some scopes do not support optional memory the same for all sample rates. The following table indicates the maximum recording length at full rate for each supported scope.

Table 6. Maximum recording lengths at maximum span using Full Rate sampling mode for Infiniium 8000/80000 models with memory as shown

Model	Max span	Recording length for given memory option configurations							
		256 K	512 K	2 M	4 M	8 M	16 M	32 M	64 M
8064	600 MHz	–	250 μ s	–	2 ms	4 ms	8 ms	16 ms	32 ms
8104	781.25 MHz	–	250 μ s	–	2 ms	4 ms	8 ms	16 ms	32 ms (3-, 4- chans)
8104	1 GHz	–	125 μ s	–	2 ms	4 ms	8 ms	16 ms	32 ms (1-, 2- chans)
80204	2 GHz	–	48 μ s	–	–	–	–	–	200 μ s ¹
80304	3 GHz	–	48 μ s	–	–	–	–	–	200 μ s ¹
80404	4 GHz	–	24 μ s	–	–	–	–	–	100 μ s ¹
80604	6 GHz	–	24 μ s	–	–	–	–	–	100 μ s ¹
80804	8 GHz ²	–	12 μ s	–	–	–	–	–	50 μ s ¹
81004	10 GHz ²	–	12 μ s	–	–	–	–	–	50 μ s ¹
81204	12 GHz ²	–	12 μ s	–	–	–	–	–	50 μ s ¹
81304	13 GHz ²	–	12 μ s	–	–	–	–	–	50 μ s ¹

1. Significantly longer when in **User Rate** sample mode for user rates up to 4 GSa/s.
2. 7.8125 GHz when using scope channels 1 and 2, or 3 and 4 at the same time.

Recording limits for Infiniium oscilloscopes continued

Table 7. Maximum recording lengths at maximum sample rate for Infiniium 9000A/9000 H-/90000/90000 X-Series models with memory as shown

Model	Max span	Recording length for given memory option configurations					
		10 M	20 M	50 M	100 M	200 M	500 M/1G/2G
9104 ¹	1 GHz	4 ms	8 ms	20 ms	40 ms	80 ms	200 ms
9104 ²	1 GHz	2 ms	4 ms	10 ms	20 ms	40 ms	100 ms
9254 ¹	2.5 GHz	2 ms	4 ms	10 ms	20 ms	40 ms	100 ms
9254 ²	2.5 GHz	1 ms	2 ms	5 ms	10 ms	20 ms	50 ms
9404 ¹	4.0 GHz	1 ms	2 ms	5 ms	10 ms	20 ms	50 ms
9404 ²	3.90625 GHz	1 ms	2 ms	5 ms	10 ms	20 ms	50 ms
90254	2.5 GHz	1 ms	2 ms	5 ms	10 ms	20 ms	50 ms
90404	4 GHz	0.5 ms	1 ms	2.5 ms	5 ms	10 ms	25 ms
90604	6 GHz	0.5 ms	1 ms	2.5 ms	5 ms	10 ms	25 ms
90804	8 GHz	0.25 ms	0.5 ms	1.25 ms	2.5 ms	5 ms	12.5 ms
91204	12 GHz	0.25 ms	0.5 ms	1.25 ms	2.5 ms	5 ms	12.5 ms
91304	13 GHz	0.25 ms	0.5 ms	1.25 ms	2.5 ms	5 ms	12.5 ms
X91304	13 GHz	0.25 ms	0.5 ms	1.25 ms	2.5 ms	5 ms	6.25 ms ³
X91604 ¹	16 GHz	0.25 ms	0.5 ms	1.25 ms	2.5 ms	5 ms	6.25 ms ³
X91604 ²	15.625 GHz	0.25 ms	0.5 ms	1.25 ms	2.5 ms	5 ms	6.25 ms ³
X92004 ¹	20 GHz	0.25 ms	0.5 ms	1.25 ms	2.5 ms	5 ms	6.25 ms ³
X92004 ²	15.625 GHz	0.25 ms	0.5 ms	1.25 ms	2.5 ms	5 ms	6.25 ms ³
X92504 ¹	25 GHz	0.25 ms	0.5 ms	1.25 ms	2.5 ms	5 ms	6.25 ms ³
X92504 ²	15.625 GHz	0.25 ms	0.5 ms	1.25 ms	2.5 ms	5 ms	6.25 ms ³
X92804 ¹	28 GHz	0.25 ms	0.5 ms	1.25 ms	2.5 ms	5 ms	6.25 ms ³
X92804 ²	15.625 GHz	0.25 ms	0.5 ms	1.25 ms	2.5 ms	5 ms	6.25 ms ³
X93204 ¹	31.25 GHz	0.25 ms	0.5 ms	1.25 ms	2.5 ms	5 ms	6.25 ms ³
X93204 ²	15.625 GHz	0.25 ms	0.5 ms	1.25 ms	2.5 ms	5 ms	6.25 ms ³
X92004Q	20 GHz	N/A	0.25 ms	0.625 ms	1.25 ms	2.5 ms	6.25 ms
X92504Q	25 GHz	N/A	0.25 ms	0.625 ms	1.25 ms	2.5 ms	6.25 ms
X93304Q	31.25 GHz	N/A	0.25 ms	0.625 ms	1.25 ms	2.5 ms	6.25 ms
X95004Q	31.25 GHz	N/A	0.25 ms	0.625 ms	1.25 ms	2.5 ms	6.25 ms
X95004Q	50 GHz						
RealEdge		N/A	0.25 ms	0.625 ms	1.25 ms	2.5 ms	3.125 ms
X96204Q	31.25 GHz	N/A	0.25 ms	0.625 ms	1.25 ms	2.5 ms	6.25 ms
X96204Q	62.5 GHz						
RealEdge		N/A	0.25 ms	0.625 ms	1.25 ms	2.5 ms	3.125 ms
9024H ¹	250 MHz	---	---	80 ms	160 ms	320 ms	400 ms ⁴
9024H ²	250 MHz	---	---	40 ms	80 ms	160 ms	200 ms ⁴
9054H ¹	500 MHz	---	---	40 ms	80 ms	160 ms	200 ms ⁴
9054H ²	500 MHz	---	---	20 ms	40 ms	80 ms	100 ms ⁴
9104H ¹	1 GHz	---	---	20 ms	40 ms	80 ms	100 ms ⁴
9104H ²	1 GHz	---	---	10 ms	20 ms	40 ms	50 ms ⁴
9204H ¹	2 GHz	---	---	10 ms	20 ms	40 ms	50 ms ⁴
9204H ²	2 GHz	---	---	5 ms	10 ms	20 ms	25 ms ⁴

1. When not using scope channels 1 and 2, or 3 and 4 at the same time.
2. When using scope channels 1 and 2, or 3 and 4 at the same time.
3. 12.5 ms when using scope channels 1 and 2 or 3 and 4 at the same time.
4. For 500 M option.

Out-of-Band Alias Exposure Zones

The user rate sampling mode increases the maximum Main Time length at the expense of possible aliasing of out-of-band signals into the frequency span of the measurement. The spectrum ranges subject to the alias conversion are called alias exposure zones. To determine if any out-of-band signals exist in the exposure zones, run the Alias¹ Exposure Zone Checker macro.

Setting up the alias exposure zone checker

Follow this procedure for setting up the Alias Exposure Zone Checker:

1. Start the 89600 VSA software application.
2. Click on **Utilities > Macros...** Use the **Import...** button to navigate to the Examples\Macros subdirectory in the directory where you installed the 89600 VSA software (for example, C:\Program Files\Keysight\89600 VSA\89601B VSA\Examples\Macros) Select **RecallSetupAfterAliasCheck** and **AliasChecker** folders, and click **OK**.

Using the alias exposure zone checker

To display the alias checker programs, click on **Window > Macros** to automatically display the Macro window.

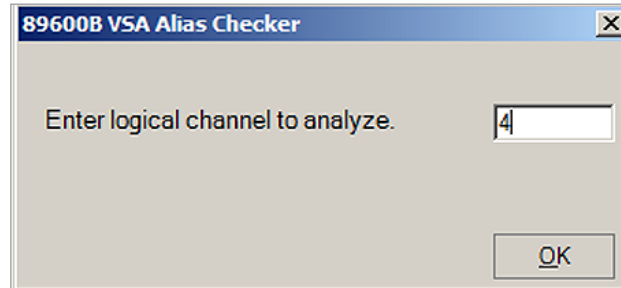
The Alias Exposure Zone Checker macro calculates the frequencies of the alias exposure zones for any combination of center frequency, span, and oscilloscope sample rate. It then measures the power in each zone and compares it to the power of the desired signal in the span of the measurement setup at the time the checker was started. An unwanted signal in an exposure zone is a source of interference if it is larger than the desired signal's amplitude minus 40 dB. This -40 dBc threshold is approximately the same level as the quantization errors in the oscilloscope's 8-bit digitizer, and represents the limit of the oscilloscope's dynamic range. The -40 dBc level is sufficient for 1 to 2 percent EVM measurements.

1. *The alias checker is not supported when using the Real Edge inputs on a 90000 Q-Series oscilloscope.*

Using the alias exposure zone checker continued

Launch the checker macro by using the tool path **Utilities > Macros...** Click on **Alias Checker** then the **Build & Run** button, or run the macro by clicking on the macro name in the macro window.

Alias zone checking is performed on only one channel at a time. A dialog window will appear asking you to select the desired oscilloscope logical channel to check. Type it in and click **OK**.



When the macro continues, a full-span spectrum trace (Figure 7) will appear in Trace A (yellow). It shows the desired signal plus any unwanted signals. Superimposed is a red Trace B showing boxes for each exposure zone frequency range. Any unwanted signal falling inside the zone box is a source of alias interference. If the height of any box is higher than the yellow reference line, the power in that zone is greater than the -40 dBc threshold of interference.

Click **Yes** in the checker dialog box to return to the original measurement setup. Click **No** for further examination of the out-of-band signals. You can return to the original measurement setup by clicking on **Utilities > Macros...** and then the **Recall Setup After Alias Check** macro and the **Build & Run** button. You may also run the **RecallSetupAfterAliasCheck** macro by clicking on the macro name in the macro window.

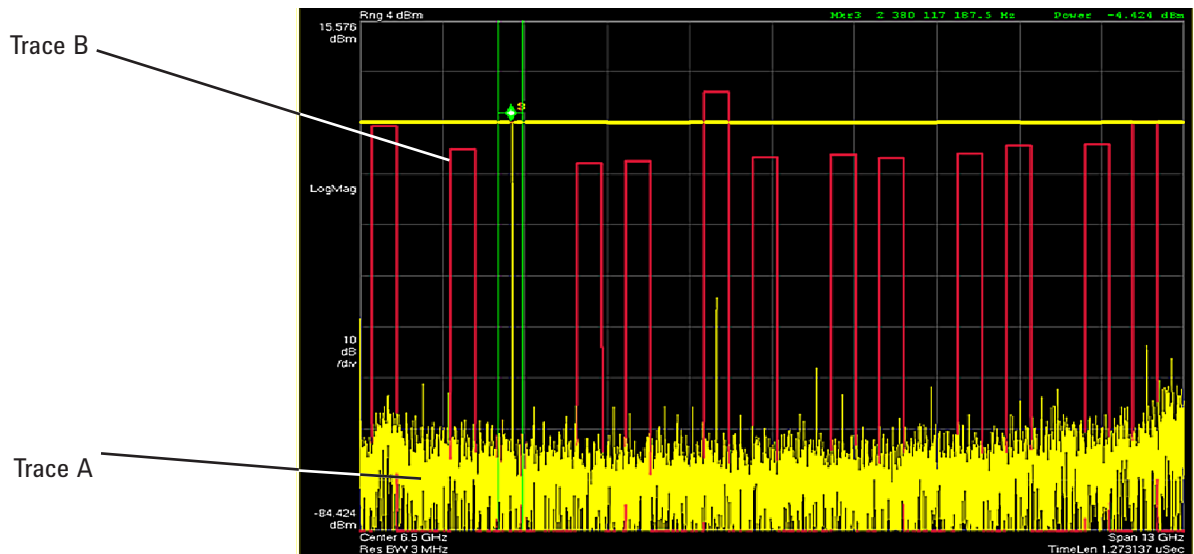


Figure 7. Alias Exposure Zone Checker results. The desired signal is at 2.38 GHz. The unwanted signal in the fifth alias zone at 5.62 GHz is over 5 dB above the threshold line, shown in yellow here.

Using the alias exposure zone checker continued

When no alias zones exist because the current sampling mode is alias free, no red zone boxes will appear. In addition, the message **No Alias Zones Detected! Restore Initial Settings?** will appear (see Figure 8).

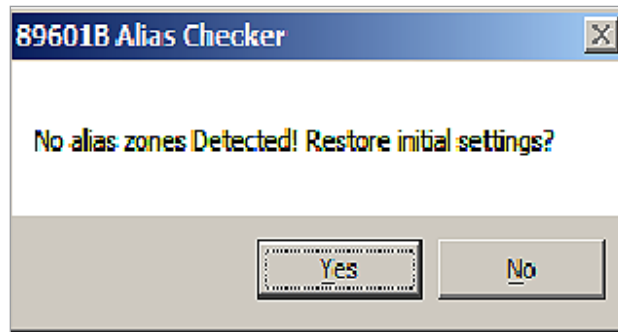
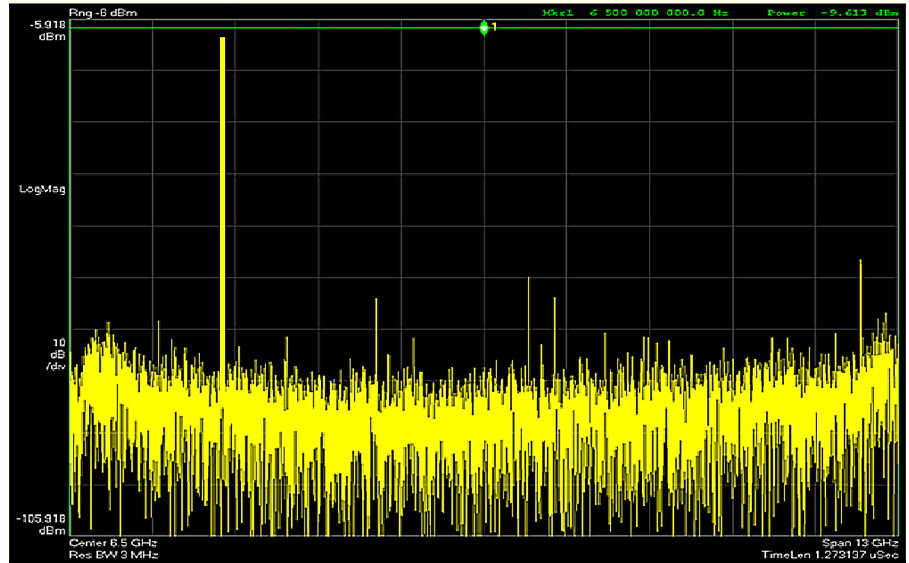


Figure 8. Alias checker results when no zones are detected. No red alias zone boxes appear.

Using the alias exposure zone checker continued

When the original center frequency/span is inadvertently tuned to an alias response of a signal whose frequency is not the center frequency, the checker will attempt to suggest the signal's frequency. The checker results at the desired center frequency location (area formed by green bands with marker lines) will show no signal, and a large signal will appear in one of the zones, as shown in Figure 9. Further, all zone boxes will be well above the yellow threshold line.

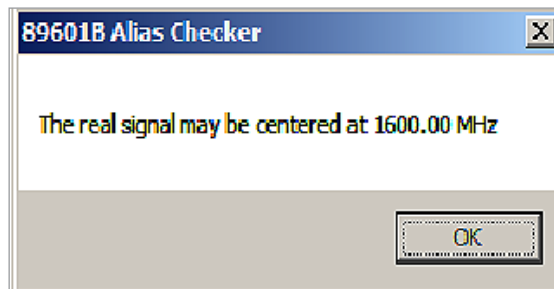
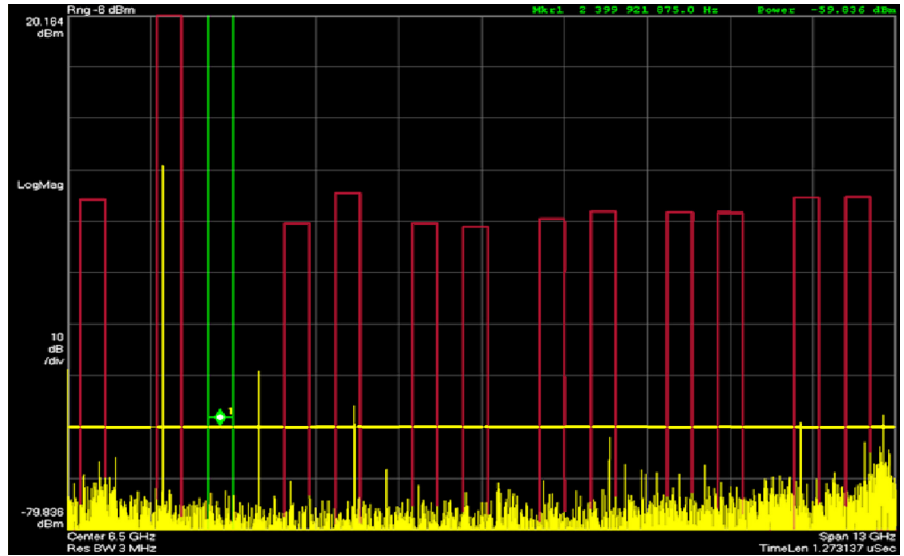


Figure 9. Alias checker results when the center frequency is originally tuned to an alias product. The checker shows no signal at the desired frequency (see green bands with marker) and large zone boxes at the zones containing the desired signal.

Appendix A

Downconverting RF and microwave signals into the range of the Infiniium oscilloscopes

External components with wide bandwidths can be used to downconvert signals into the range of the ultra-broadband VSA software and Infiniium oscilloscope combination.

The 89600 VSA software can account for the mixing equation of the external downconverter. While the downconverter cannot be controlled by the software, the downconverter's input center frequency, IF bandwidth, external bandwidth, and IF mirroring can be taken into account by using the **Input>User Calibration...** menu tab and making appropriate selections for your hardware set-up. See the help text for further details on using the external frequency tool.

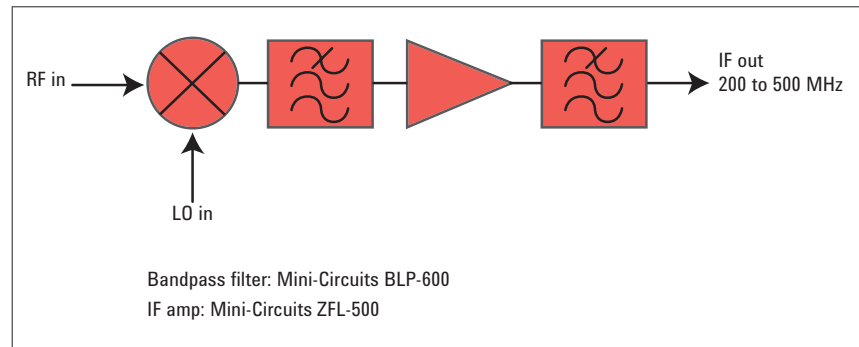


Figure 10. Block diagram of suggested downconverter. See Table 8 for further details.

Table 8. External wideband downconverter details

RF range	Mixer	LO	IF amp	Remarks
0 to 13 GHz (see Table 1)		None	None	Use oscilloscope Ch 1 or Ch 3 (VSA Ch 2)
10 MHz to 26.5 GHz	Keysight N5280A	Keysight N5183A	$F_{IF} = 10 \text{ kHz} - 1.5 \text{ GHz}$	Four coherent channels on common LO
0.2 to 6 GHz	Marki ¹ M2-0006MA	16 to 19 dBm $F_{LO} = F_{RF} - F_{IF}$	Mini-Circuits ² ZFL - 500 $F_{IF} = 200 - 500 \text{ MHz}$	Mxr, CL = 8 dB TOI = 18 dBm Amp, gain = 20 dB NF = 5.5 dB TOI = +18 dBm
5 to 40 GHz	Marki ¹ M9-0540IN	3 to 17 dBm $F_{LO} = F_{RF} - F_{IF}$	As above	Mxr, CL = 8 dB TOI = 16 dBm
26.5 to 40 GHz	Keysight 11970A	15 dBm $F_{LO} = (F_{RF} - F_{IF})/8$ $F = 0 - 1 \text{ GHz}$	As above	8th harmonic waveguide mixer. Mxr, CL = 22 dB TOI = 15 dBm
33 to 50 GHz	Keysight 11970Q	15 dBm $F_{LO} = (F_{RF} - F_{IF})/10$ $F_{IF} = 0 - 1 \text{ GHz}$	As above	10th harmonic waveguide mixer. Mxr, CL = 24 dB, TOI = 15 dBm

1. Marki Microwave,
<http://www.markimicrowave.com>
Telephone: 408-778-4200, FAX: 408-778-4300,
215 Vineyard Court, Morgan Hill, CA 95037

2. Mini-Circuits, Inc.,
1-800-654-7949,
44-1252-83600,
<http://www.minicircuits.com>

Appendix B

Cables and I/O cards for connecting a PC to an Infiniium oscilloscope

Table 9. PC interfaces and connection cables

Description	Part number	Notes
PCMCIA GPIB card	778034-02	For laptop PCs. Comes with two-meter GPIB cable. Available from National Instruments.
PCI GPIB interface card	82350	For desktop PCs. Requires GPIB cable (10833A). Available from Keysight.
USB/GPIB interface	82357	Requires USB port. Available from Keysight.
One-meter GPIB cable	10833A	Available from Keysight.
LAN cross-over cable	8121-0545	Available from Keysight.
LAN/GPIB gateway	E5810	Available from Keysight.

Appendix C

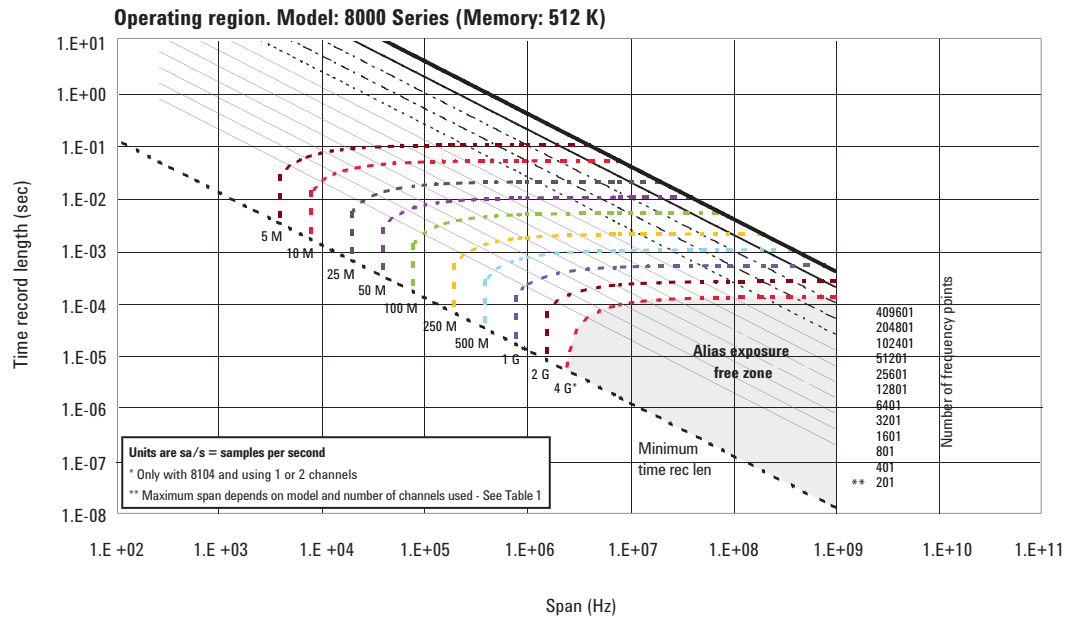
PC requirements to run 89600 VSA software

For external PC use, the 89600 VSA software requires a PC connected via GPIB or LAN I/O to the Infiniium oscilloscope. Either a laptop or desktop PC may be used. For best immunity from electrostatic discharge (ESD), use a desktop PC. For a list of current PC requirements, see www.keysight.com/find/89600-pc

Appendix D

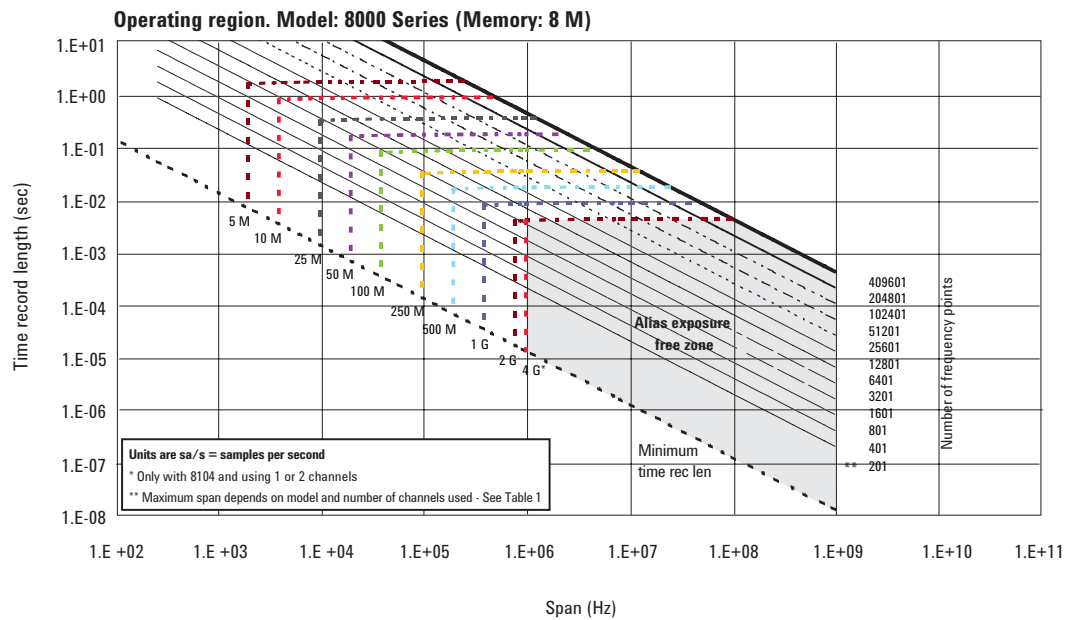
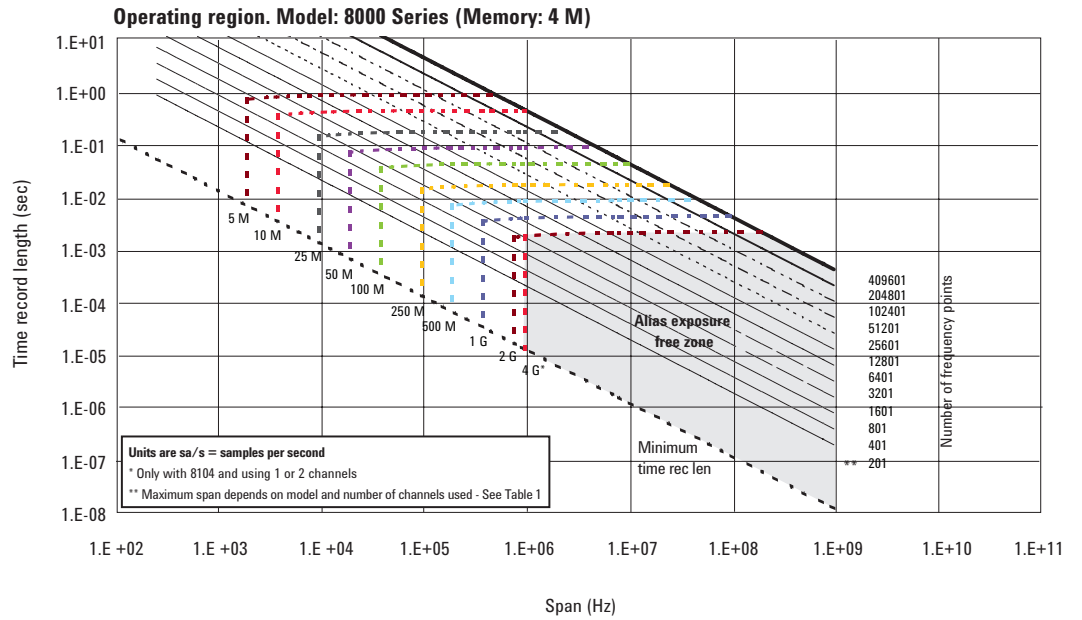
Operating region curves

Note: All graphs shown for **Resample Location** set to **Driver**. **Maximum Time Record** lengths may be significantly shorter when **Resample Location** is set to **Measurement**.



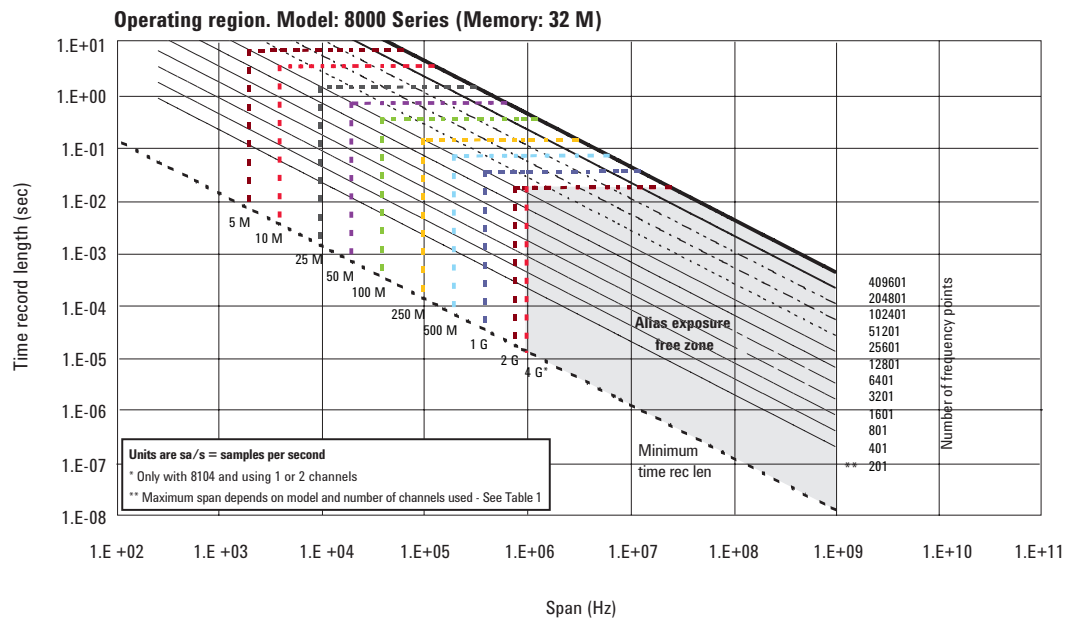
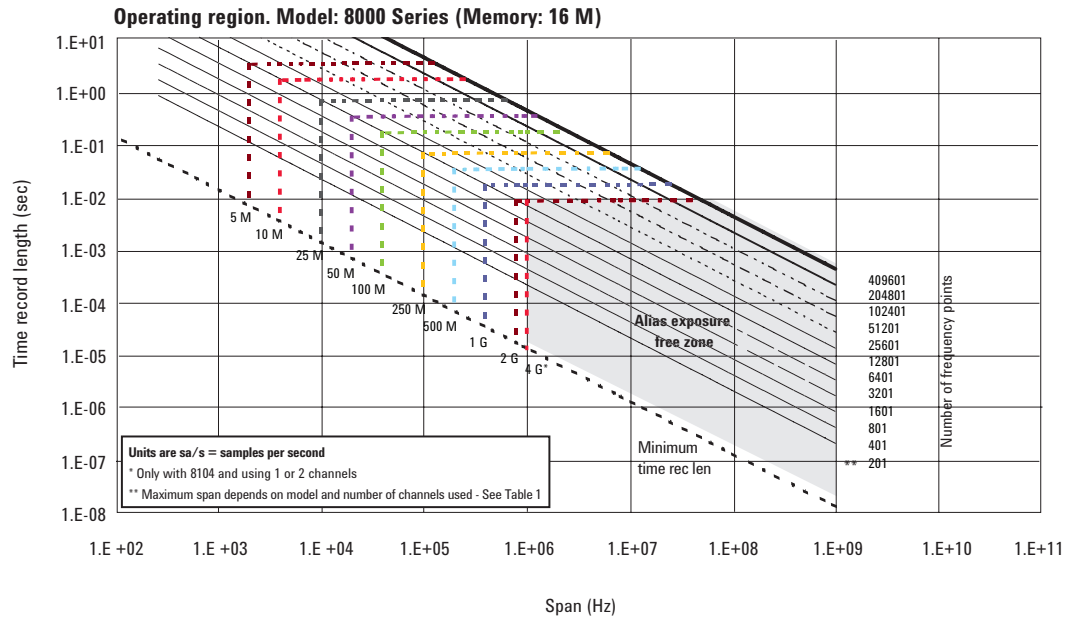
Appendix D

Operating region curves continued



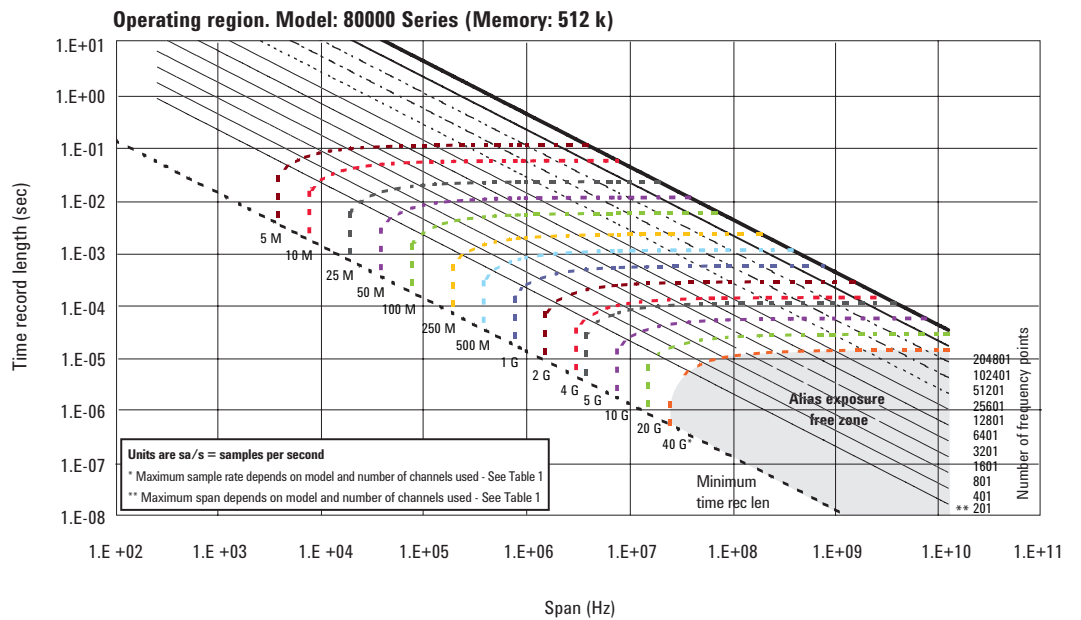
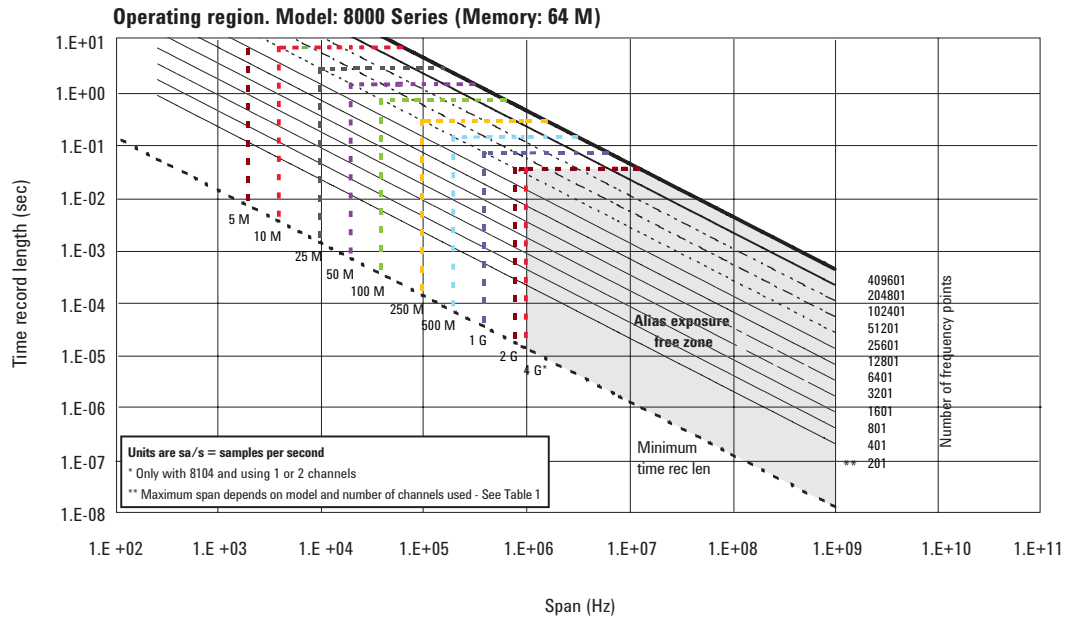
Appendix D

Operating region curves continued



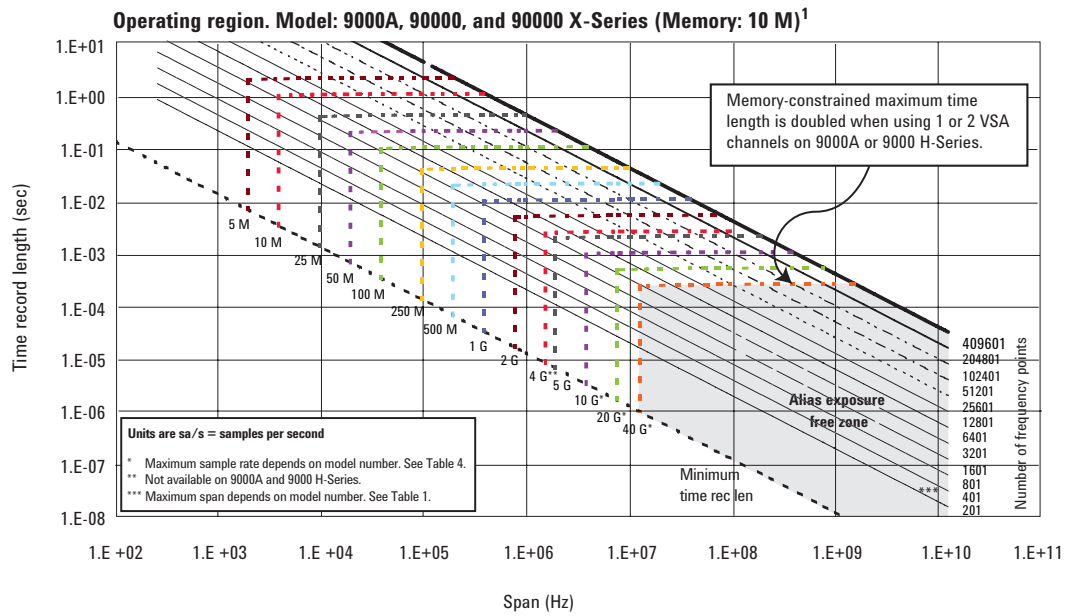
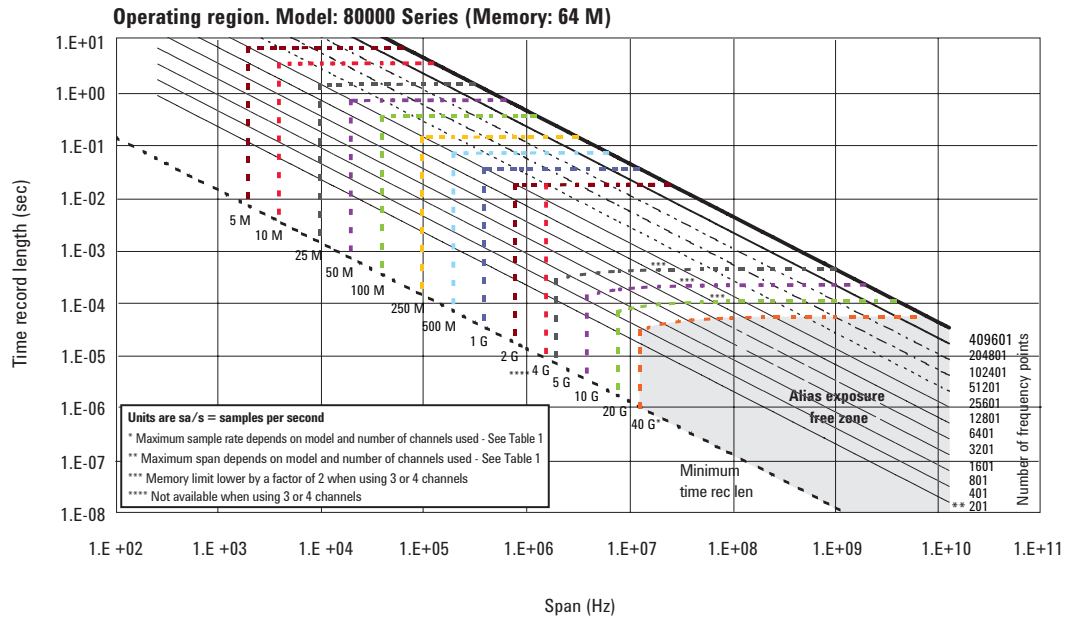
Appendix D

Operating region curves continued



Appendix D

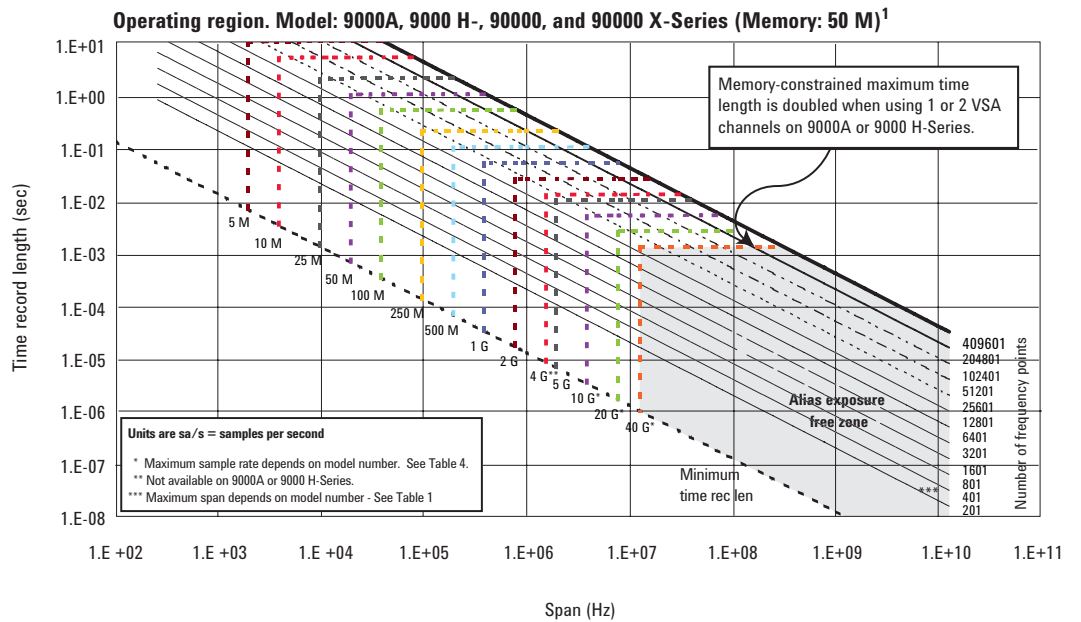
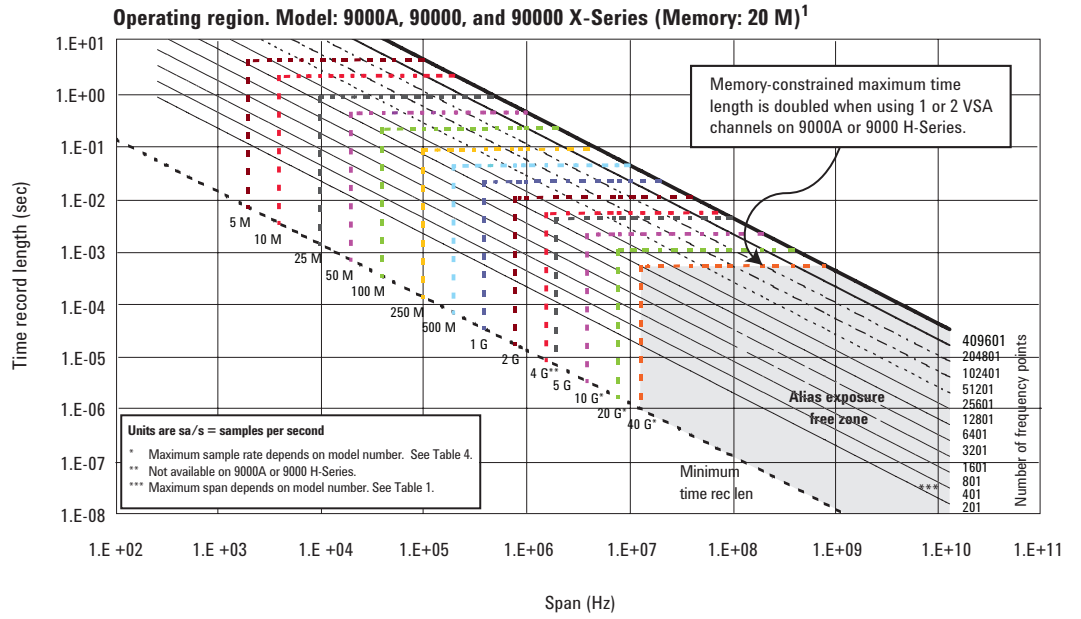
Operating region curves continued



1. The 90000 X-Series Infiniium models have similar operating ranges and allow operation at 80 Gsa/s on 2 channels.

Appendix D

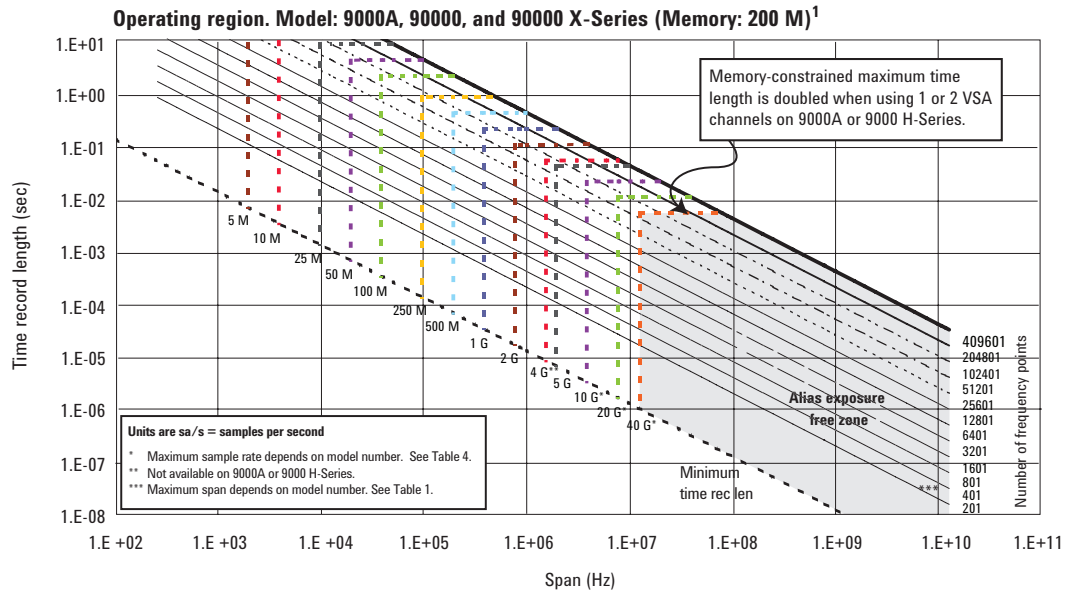
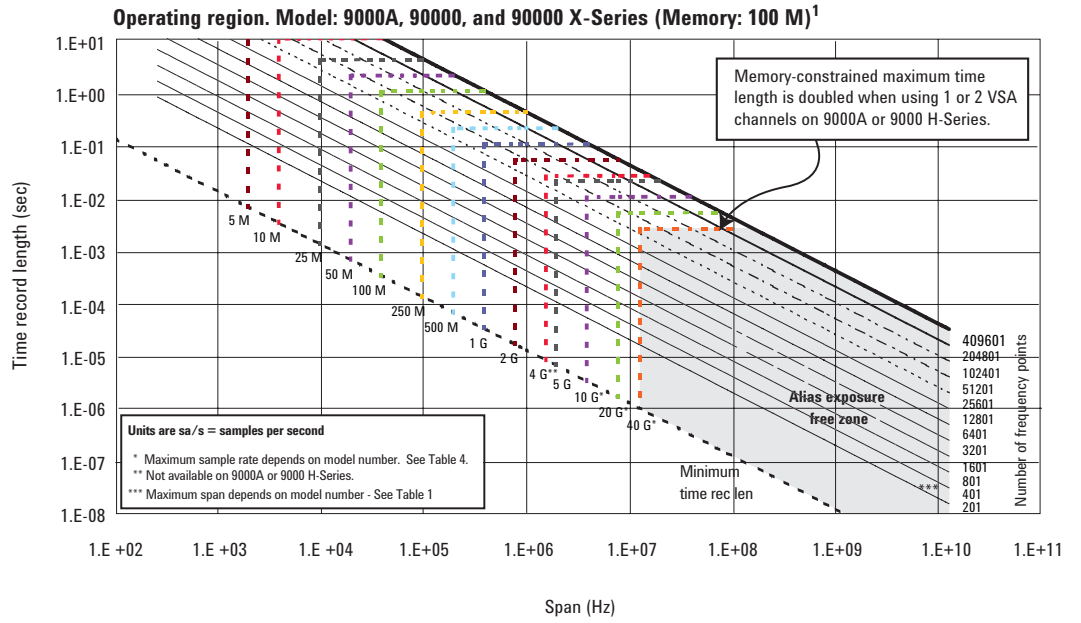
Operating region curves continued



1. The 90000 X-Series Infiniium models have similar operating ranges and allow operation at 80 Gsa/s on 2 channels.

Appendix D

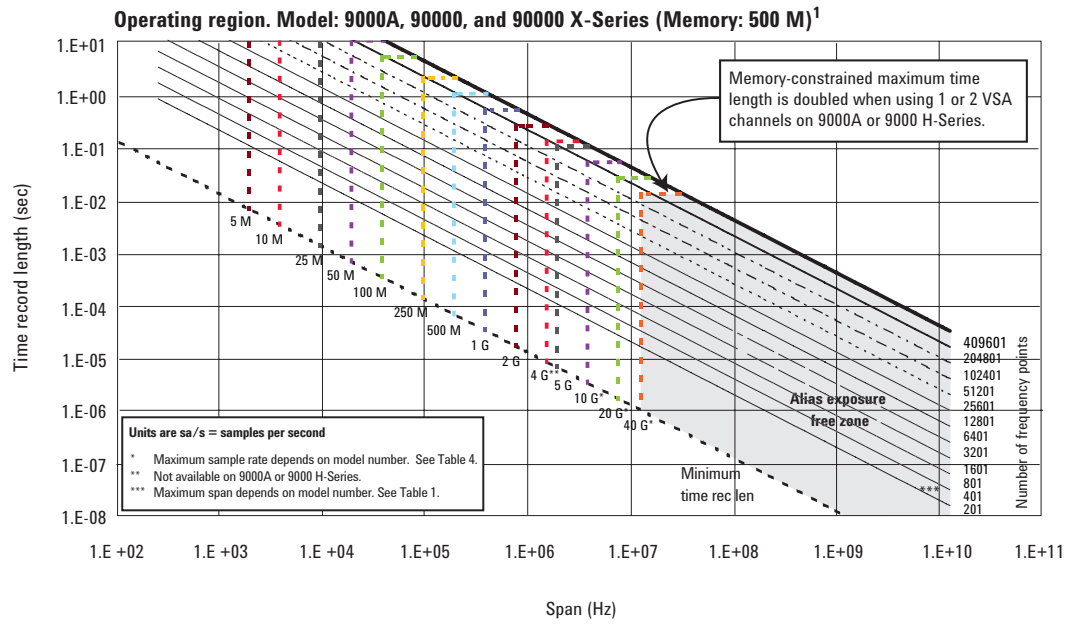
Operating region curves continued



1. The 90000 X-Series Infiniium models have similar operating ranges and allow operation at 80 Gsa/s on 2 channels.

Appendix D

Operating region curves continued



1. The 90000 X-Series Infiniium models have similar operating ranges and allow operation at 80 Gsa/s on 2 channels.

Additional Resources

Web

www.keysight.com/find/89600vsa
www.keysight.com/find/Infiniium

Literature

89600 VSA software, Brochure, 5990-6553EN

89600 VSA software, Configuration Guide, 5990-6386EN

89601B/BN-200 Basic VSA and -300 Hardware Connectivity,
Technical Overview, 5990-6405EN

InfiniiVision 6000/7000 Series Oscilloscopes with 89600 VSA software,
Application Note, 5990-6820EN

Successful VSA Analysis Using an Oscilloscope, Application Note, 5990-3276EN

myKeysight

myKeysight

www.keysight.com/find/mykeysight

A personalized view into the information most relevant to you.



www.axiestandard.org

AdvancedTCA® Extensions for Instrumentation and Test (AXIe) is an open standard that extends the AdvancedTCA for general purpose and semiconductor test. Keysight is a founding member of the AXIe consortium.



www.lxistandard.org

LAN eXtensions for Instruments puts the power of Ethernet and the Web inside your test systems. Keysight is a founding member of the LXI consortium.

Three-Year Warranty

www.keysight.com/find/ThreeYearWarranty

Keysight's commitment to superior product quality and lower total cost of ownership. The only test and measurement company with three-year warranty standard on all instruments, worldwide.

Keysight Assurance Plans

www.keysight.com/find/AssurancePlans

Up to five years of protection and no budgetary surprises to ensure your instruments are operating to specification so you can rely on accurate measurements.

www.keysight.com/quality

Keysight Electronic Measurement Group

DEKRA Certified ISO 9001:2008

Quality Management System

Keysight Channel Partners

www.keysight.com/find/channelpartners

Get the best of both worlds: Keysight's measurement expertise and product breadth, combined with channel partner convenience.

WiMAX, Mobile WiMAX, WiMAX Forum, the WiMAX Forum logo, WiMAX Forum Certified, and the WiMAX Forum Certified logo are US trademarks of the WiMAX Forum.

www.keysight.com/find/89600vsa

www.keysight.com/find/infiniium

For more information on Keysight Technologies' products, applications or services, please contact your local Keysight office. The complete list is available at: www.keysight.com/find/contactus

Americas

Canada	(877) 894 4414
Brazil	55 11 3351 7010
Mexico	001 800 254 2440
United States	(800) 829 4444

Asia Pacific

Australia	1 800 629 485
China	800 810 0189
Hong Kong	800 938 693
India	1 800 112 929
Japan	0120 (421) 345
Korea	080 769 0800
Malaysia	1 800 888 848
Singapore	1 800 375 8100
Taiwan	0800 047 866
Other AP Countries	(65) 6375 8100

Europe & Middle East

Austria	0800 001122
Belgium	0800 58580
Finland	0800 523252
France	0805 980333
Germany	0800 6270999
Ireland	1800 832700
Israel	1 809 343051
Italy	800 599100
Luxembourg	+32 800 58580
Netherlands	0800 0233200
Russia	8800 5009286
Spain	0800 000154
Sweden	0200 882255
Switzerland	0800 805353
	Opt. 1 (DE)
	Opt. 2 (FR)
	Opt. 3 (IT)
United Kingdom	0800 0260637

For other unlisted countries:
www.keysight.com/find/contactus
 (BP-06-09-14)

